



EXOS
DEFENSE



KWIKGUARD M1913 RAIL COVERS

KWIKGUARD M1913 RAIL COVER

Checkered surface for retention and control

Prevents damage to M1913 rails

May be installed in any position on M1913 rail

Impact-modified glass-filled nylon material

Available in three sizes to facilitate a variety of accessories

Available in seven standard colors (As Shown)

Made in the USA!



Made In USA
www.ExosDefense.com





KWIKGUARD

M1913 RAIL COVERS

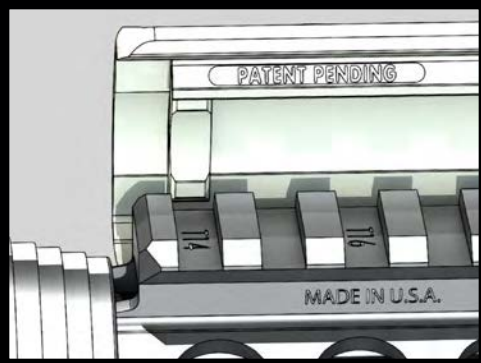


Figure 1 - Align Tooth

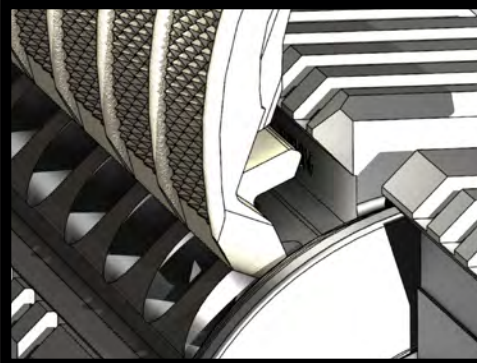


Figure 2 - Hook

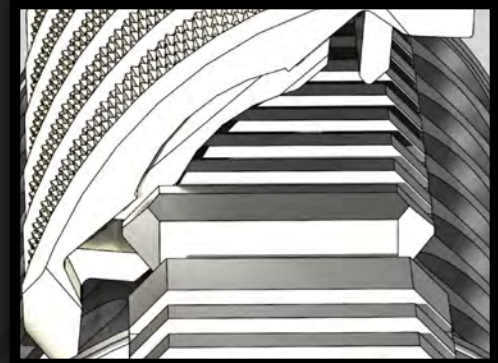


Figure 3 - Adjust

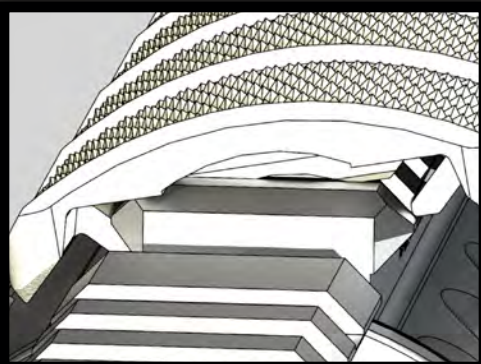


Figure 4 - Positioned

Installation Instructions:

Look on the back of your Kwikguard panel to find the locating tooth (The locating tooth runs perpendicular to the length of the panel and will be near the www.kwikguards.com emblem). Hook one side of the Kwikguard panel onto your rail (Figure 2 and 3) while simultaneously aligning the locating tooth to any slot in your M1913 rail (Figure 1). Move the panel slightly to make sure the locating tooth on your Kwikguard is placed in the M1913 rail slot properly (Figure 4). Support your rail, then give the Kwikguard panel a firm smack with the palm of your hand to snap it into place (Figure 5). Firmly smack the panel again from one end to the other to ensure it is fully seated on the rail.

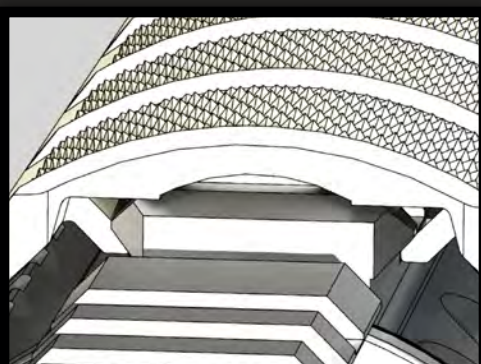


Figure 5 - Installed

Removal Instructions:

To remove your Kwikguard Rail Cover, hook a finger, cartridge case, or other item under one corner of the Kwikguard panel and lift the panel away from the rail. Once the corner is lifted away from the rail you can remove the panel by hand.

